

Capitalising Human Mobility for Poverty Alleviation and Inclusive Development in Myanmar (CHIME)



Outline of the CHIME report

7 September 2018



National
ownership



Policy
coherence



Inclusive
dialogue

US

Global
experience

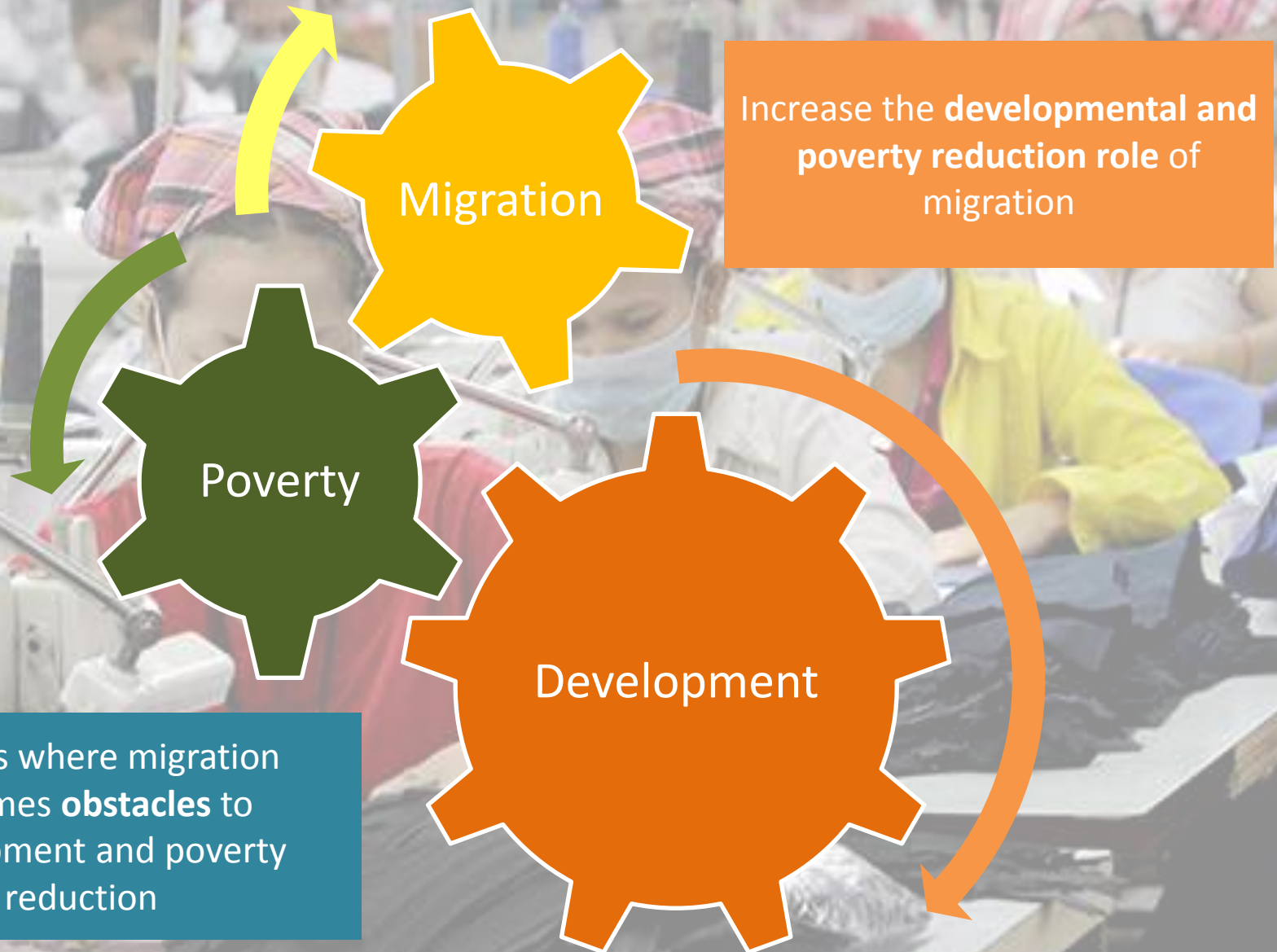
UNIVERSITY
OF SUSSEX



Livelihoods and Food Security Trust Fund



Objectives of the Study



Increase the **developmental and poverty reduction** role of migration

Poverty

Migration

Development

Address where migration becomes **obstacles** to development and poverty reduction

Methodology

- Quantitative and qualitative
- 2 rounds of data collection
- Community and HH questionnaires and aide memoire

HH roster	Migration aspirations
Education	HH assets
Labour and employment	HH living conditions
Return migrants	HH income
Current migrants	Food security and poverty
Migration information	Financial services
Migration finance	Land



Sampling – quantitative

- **Random sampling** with support of the **Department of Population**
- Findings are **representative** of rural HHs in case of **Mandalay** and **Ayeyarwady**, **not** in **Rakhine** and **Shan**
- Same HHs are **surveyed twice**

State/region	Planned		1st approved		1st actual		2nd approved		2nd actual		HHs covered	
	EA	HH	EA	HH	EA	HH	EA	HH	EA	HH	EA	HH
Mandalay	43	860	43	860	42	840	42	840	42	830	42	840
Ayeyarwady	43	860	43	860	43	860	43	860	43	836	43	860
Shan	43	860	23	460	23	617*	18	360	18	339	24	637*
Rakhine	43	860	32	640	26	519	43	860	39	770	39	779
Total	172	3,440	141	2,820	134	2,836*	146	2,920	142	2,775	172	3,116*

* Included HHs in towns. Total rural HHs is 2,819.

Sampling - qualitative

- Migrant sending households and their migrating family members **identified through quantitative survey**
- HHs/migrants were **interviewed once**

State/region	1st round		2nd round	
	EA	Interviews	EA	Interviews
Mandalay	2	19	2	16
Ayeyarwady	2	17	2	16
Shan	2	16	2	16
Rakhine	2	16	2	16
Yangon (Destination)	1	15	1	15
Mandalay (Destination)	1	15	-	-
Tachileik (Destination)	-	-	1	15
Total	10	98	10	94

Snapshot of migration

Mandalay

HHs with migrants - 36%
Internal-international ratio – 79:21
M-F ratio (internal) – 57:43
M-F ratio (international) – 81:19

Limited areas S&E Shan

HHs with migrants – 21%
Internal-international ratio – 86:14
M-F ratio (internal) – 43:57
M-F ratio (international) – 35:65

Rakhine

HHs with migrants - 26%
Internal-international ratio – 51:49
M-F ratio (internal) – 52:48
M-F ratio (international) – 83:17

Ayeyarwady

HHs with migrants – 19%
Internal-international ratio – 89:11
M-F ratio (internal) – 47:53
M-F ratio (international) – 73:27



Percentage of economically active migrants who send remittances in the last 12 months

Destination	Region/State of Origin			
	Ayeyarwady	Mandalay	Rakhine	Limited areas S&E Shan
Ayeyarwady	23%	1%	1%	0%
Mandalay	3%	43%	1%	7%
Rakhine	0%	1%	46%	0%
Shan	0%	9%	1%	66%
Yangon	65%	28%	36%	13%
Kachin	0%	5%	11%	0%
Other	9%	13%	4%	14%

International destinations of migrants by region/state of origin

	Ayeyarwady	Mandalay	Rakhine	Limited areas S&E Shan	Total
Malaysia	2	69	58	0	129
Thailand	16	18	61	17	112
China	1	7	16	0	24
Republic of Korea	1	11	2	0	14
Singapore	4	0	1	0	5
Bangladesh	0	0	4	0	4
Others	2	3	5	0	9
Total	26	108	147	17	297

Employment types of migrants at destination who used to be in irregular employment prior to migration

	Ayeyarwady	Mandalay	Rakhine	Limited areas S&E Shan
Regular employment	66%	56%	43%	67%
Irregular employment	34%	44%	57%	33%

Factors influencing the decisions on the migration destinations (multiple answers)

	International		Internal	
	Male	Female	Male	Female
Had friends in destination	48%	48%	44%	45%
Had families/relatives in destination	21%	31%	46%	54%
Brokers/RAs were able to arrange migration	51%	30%	1%	1%
Confident to get work at destination	21%	17%	20%	21%
Work wa arranged prior to migration	10%	13%	13%	16%
Highest income option	12%	11%	5%	7%
Destination was close to home	2%	0%	9%	10%
Cost of migration was low	4%	3%	6%	3%

Percentage of economically active migrants who send remittances in the last 12 months

	Mandalay		Rakhine		S&E Shan Selected areas		Ayeyarwady	
	Male	Female	Male	Female	Male	Female	Male	Female
International	84%	82%	50%	40%	N/A	N/A	84%	N/A
Internal	59%	64%	32%	66%	N/A	45%	83%	77%