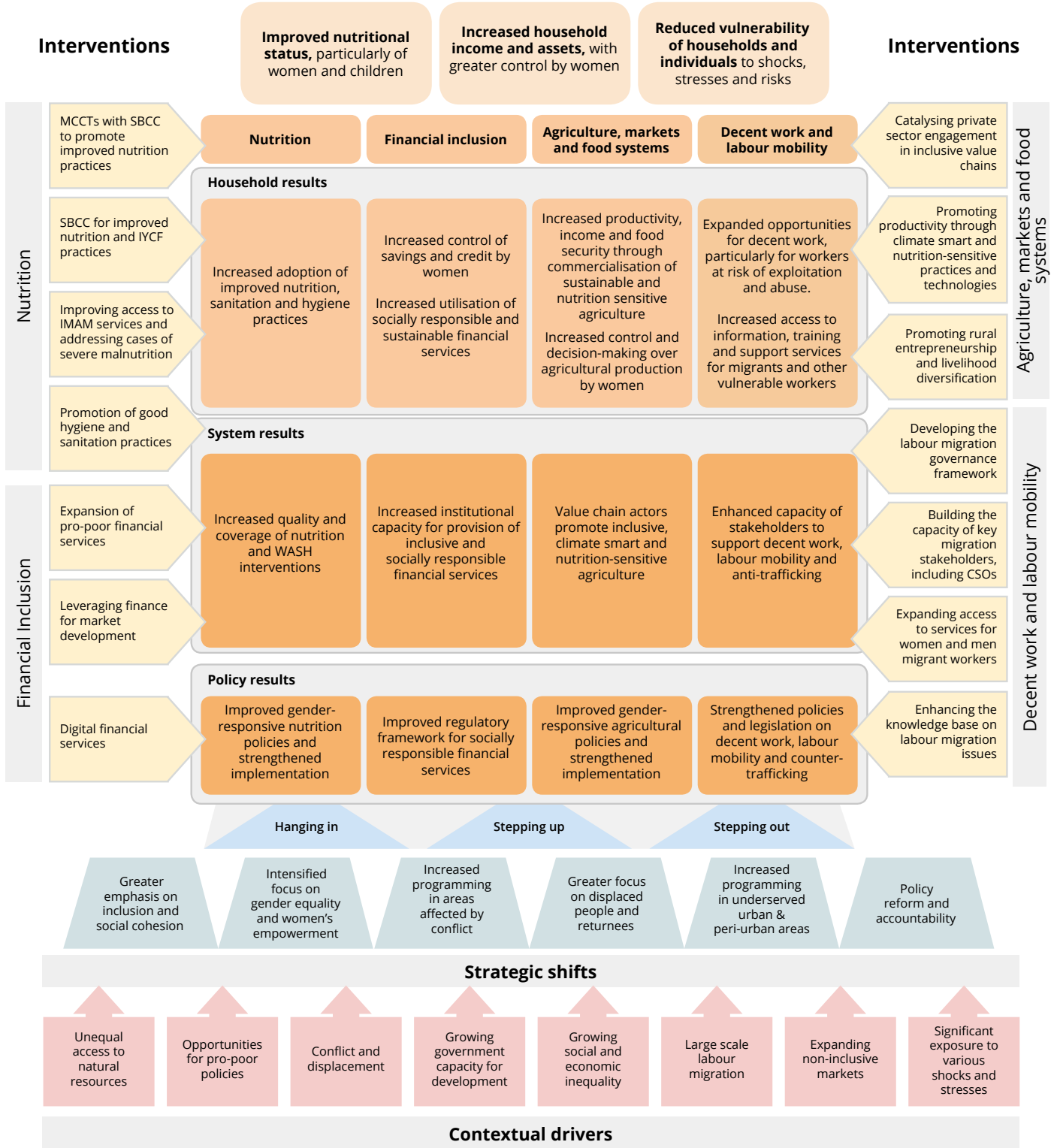




# LIFT Strategy Diagram - 2019 to 2023

**Goal:**  
To support Myanmar in achieving the Sustainable Development Goals (1, 2, 5, 6 and 8)

**Purpose:**  
To strengthen the resilience and sustainable livelihoods of **poor and vulnerable groups in Myanmar**, particularly women, internally displaced people, migrants, smallholder farmers, landless people, people with disabilities and those vulnerable to trafficking and forced labour



# LIFT LOGICAL FRAMEWORK 2019-2023

*Milestones and targets currently under consideration*



Result	Indicator <sup>1</sup>	Data Source	2018	2019	2020	2021	2022	2023
<b>GOAL</b> To support Myanmar in achieving SDGs	G1: % of moderately/ severely stunted children under 5 at national level	MOHS, DHS						
	G2: % of women of reproduction age achieving minimum dietary diversity at national level	MOHS, DHS						
	G3: % of population below the international extreme poverty line at national level	World Bank, MPLCS						
	G4: % of moderate and severe food insecurity at national level	FAO, Food Insecurity Experience Scale						

Result	Indicator	Data Source	2018-2018 Achievement	2019 Milestone	2020 Milestone	2021 Milestone	2022 Milestone	2023 Target
<b>PURPOSE:</b> To strengthen the resilience and sustainable livelihoods of poor and vulnerable groups in Myanmar, particularly women, internally displaced people, migrants, smallholder farmers, landless people, people with disabilities and those vulnerable to trafficking and force labour								
I-1: Improved nutritional status, particularly of women and children	I-1.1: %/# of households in LIFT areas with an acceptable household dietary diversity score	LIFT HH Survey (HDDS)						
	I-1.2: % of moderately/ severely stunted children under 5 years in LIFT areas	LIFT HH Survey (H/A)						
	I-1.3: % of women of reproductive age (15-49 years) in LIFT areas achieving minimum dietary diversity	LIFT HH Survey (MDD-W)						

1. Coding System:

- G – Goal
- I – Impact
- N – Nutrition programme
- F – Financial Inclusion programme
- A – Agriculture, Markets & Food Systems programme
- D – Decent Work & Labour Mobility programme

- P – Policy level
- S – System level
- H- Household level

Result No. #    Indicator No. #

**LIFT LOGICAL FRAMEWORK 2019-2023**  
*Milestones and targets currently under consideration*



Result	Indicator	Data Source	2010-2018 Achievement	2019 Milestone	2020 Milestone	2021 Milestone	2022 Milestone	2023 Target
I-2: Increased household income and assets with greater control by women	I-2.1: % of households in LIFT areas below the international extreme poverty line	LIFT HH Survey (PPI)						
	I-2.2: %/# of households in LIFT areas with increased income	LIFT HH Survey						
	I-2.3: %/# of households in LIFT areas with increased asset ownership	LIFT HH Survey						
	I-2.4: % of male-headed households in LIFT areas in which women report at least equal control over assets and income	LIFT HH Survey (WEAI)						
I-3: Reduced vulnerability of households and individuals to shocks, stresses, and risks	I-3.1: Prevalence of moderate and severe food insecurity in LIFT areas	LIFT HH Survey (FIES)						
	I-3.2: %/# of people in LIFT areas whose resilience has been improved and ability to cope has increased	LIFT HH Survey (Resilience index)						
	I-3.3: %/# of households in LIFT areas categorised as vulnerable	LIFT HH Survey (Vulnerability Index)						
	I-3.4: % of informal employment in non- agriculture employment in LIFT areas	LIFT HH Survey						

**LIFT LOGICAL FRAMEWORK 2019-2023**  
Milestones and targets currently under consideration



Nutrition Programme								
Result	Indicator	Data Source	2010-2018 Achievement	2019 Milestone	2020 Milestone	2021 Milestone	2022 Milestone	2023 Target
<b>NP-1: New and/or improved gender-responsive public sector policies, programmes, and expenditure that support:</b> <ul style="list-style-type: none"> <li>• Implementation of the MS-NPAN including SBCC for MCCT &amp; MIYCF, IMAM scale-up, food fortification, and the ADS nutrition-sensitive agriculture component.</li> <li>• Increased sub-national support for the implementation of the MS-NPAN</li> <li>• Implementation of National Social Protection Strategic Plan (NSPSP) including MCCT, social pensions, people with disabilities.</li> </ul>	NP-1.1: # of changes to nutrition related public sector policies and programmes supported by LIFT	Programme/IPs						
	NP-1.2: # of changes in nutrition related public sector budget allocation/spending supported by LIFT	Programme/IPs						
	NP-1.3: # of LIFT supported nutrition related policy oriented events organised	Programme/IPs						
	NP-1.4: # of LIFT supported nutrition related policy oriented publications provided to key policy makers	Programme/IPs						
<b>NS-1: Increased quality and coverage of nutrition interventions</b>	NS-1.1: # of individuals reached with LIFT supported nutrition specific interventions	IPs						
	NS-1.2: # of individuals reached with LIFT supported nutrition sensitive interventions	IPs						
	NS-1.3: # of households in LIFT areas with access to improved drinking water and sanitation facilities	IPs						
<b>NH-1: Increased adoption of improved nutrition, dietary, sanitation and hygiene practices</b>	NH-1.1: % of children under 6 months in LIFT areas who are exclusively breastfed	LIFT HH Survey						
	NH-1.2: % of children 6-23 months in LIFT areas with minimum adequate acceptable diet	LIFT HH Survey						

Nutrition

# LIFT LOGICAL FRAMEWORK 2019-2023

Milestones and targets currently under consideration



	Result	Indicator	Data Source	2010-2018 Achievement	2019 Milestone	2020 Milestone	2021 Milestone	2022 Milestone	2023 Target
Nutrition		NH-1.3: %/# of households in LIFT areas using (a) safely managed sanitation services and (b) a hand-washing facility with soap and water	LIFT HH Survey						
		NH-1.4: %/# of households in LIFT areas using safely managed drinking water services	LIFT HH Survey						
		NH-1.5: % of men/women in union with children under two in LIFT areas who make child health and nutrition decisions jointly with spouse/partner	LIFT HH Survey (FtF)						
<b>Financial Inclusion Programme</b>									
Financial Inclusion	FP-1: New and/or improved gender-responsive public sector policies, programmes, and expenditure that: • Support FRD's examination and supervision of MFIs • Support MOPF's implementation the National Savings Mobilization Policy • Support the revision of microfinance regulation and practice to better serve MFI clients	FP-1.1: # of changes to FI related public sector policies and programmes supported by LIFT	Programme/ IPs						
		FP-1.2: # of changes in FI related public sector budget allocation/ spending supported by LIFT	Programme/ IPs						
		FP-1.3: # of LIFT supported FI related policy oriented events organised	Programme/ IPs						
		FP-1.4: # of LIFT supported FI related policy oriented publications provided to key policy makers	Programme/ IPs						
	FS-1: Increased institutional capacity for provision of inclusive and socially responsible financial services	FS-1.1: %/# of LIFT supported MFIs financially self-sustaining	Programme/ IPs						
		FS-1.2: %/# of LIFT supported MFIs operating efficiently	Programme/ IPs						
		FS-1.3: # of individuals with access to LIFT supported financial services (active clients)	Programme/ IPs						
		FS-1.4: Value of private sector investment leveraged	Programme						

# LIFT LOGICAL FRAMEWORK 2019-2023

*Milestones and targets currently under consideration*



	Result	Indicator	Data Source	2010-2018 Achievement	2019 Milestone	2020 Milestone	2021 Milestone	2022 Milestone	2023 Target
Financial Inclusion	FH-1: Increased utilization of socially responsible and sustainable financial services	FH-1.1: # of clients using micro, small and medium enterprise loans from LIFT supported MFIs and banks	Programme/ IPs						
		FH-1.2: Total value of loans disbursed by LIFT supported MFIs and banks	Programme/ IPs						
		FH-1.3: % of clients of LIFT supported MFIs and banks who do not meet their loan repayment terms	Programme/ IPs						
		FH-1.4: % of individual households receiving LIFT supported financial services moving out of extremely poor/poor to near poor status over the last twelve months	Programme/ IPs (PPI)						
	FH-2: Increased control of credit and savings by women	FH-2.1: %/# of households with women reporting equal or greater control over LIFT supported credit and savings	LIFT HH Survey (WEAI)						
<b>Agriculture, Markets, &amp; Food Systems Programme</b>									
Agriculture, Markets, & Food Systems	AP-1: New and/or improved gender-responsive public sector policies, programmes, and expenditure that support: <ul style="list-style-type: none"> <li>• Implementation of the ADS and MoALI's contribution to MS-NPAN</li> <li>• Inclusive value chains</li> <li>• Inclusive, nutrition-sensitive crop, livestock and aquaculture practices</li> <li>• Inclusive climate-smart crop, livestock, and aquaculture practices</li> <li>• Land tenure security for small smallholder famers</li> <li>• Natural resource management</li> </ul>	AP-1.1: # of changes to agriculture related public sector policies and programmes supported by LIFT	Programme/ IPs						
		AP-1.2: # of changes in agriculture related public sector budget allocation/spending supported by LIFT	Programme/ IPs						
		AP-1.3: # of LIFT supported agriculture related policy oriented events organised	Programme/ IPs						
		AP-1.4: # of LIFT supported agriculture related policy oriented publications provided to key policy makers	Programme/ IPs						

# LIFT LOGICAL FRAMEWORK 2019-2023

Milestones and targets currently under consideration



Agriculture, Markets, & Food Systems

Result	Indicator	Data Source	2010-2018 Achievement	2019 Milestone	2020 Milestone	2021 Milestone	2022 Milestone	2023 Target
AS-1: Value chain actors promote inclusive, climate smart and/or nutrition-sensitive agriculture	AS-1.1: # of LIFT supported value chain service providers (public, private, CSO) promoting inclusive, climate smart and/or nutrition-sensitive agricultural production	IPs						
	AS-1.2: %/# of LIFT-supported input/service providers reporting business growth	IPs						
	AS-1.3: %/# of individuals reached by LIFT-supported agricultural advisory services	IPs						
	AS-1.4: # of value chain related decent jobs created for vulnerable individuals with LIFT support	IPs						
AH-1: Increased production, income and food security through commercialisation and/or diversification of sustainable and nutrition-sensitive agriculture	AH-1.1: %/# of people reached by LIFT-supported advisory services using Good Agricultural Practices, inputs and technologies (including mechanisation)	IPs						
	AH-1.2: Area/% of cultivated land under Good Agricultural Practices in LIFT areas.	Programme/ IPs						
	AH-1.3: Average estimated value of agricultural production, consumed or sold, by households receiving LIFT supported agricultural advisory services	IPs						
	AH-1.4: #/% of LIFT supported farmers reporting increased income from agricultural activities	IPs						
AH-2: Increased control and decision-making over agricultural production and related income by women	AH-2.1: #/% of women in LIFT-supported households reporting equal or greater access, control and decision-making regarding agricultural production and related income	LIFT HH Survey (WEAI)						

Updated: 12 February 2019

**LIFT LOGICAL FRAMEWORK 2019-2023**  
Milestones and targets currently under consideration



Decent Work and Labour Mobility

Decent Work and Labour Mobility Programme								
Result	Indicator	Data Source	2010-2018 Achievement	2019 Milestone	2020 Milestone	2021 Milestone	2022 Milestone	2023 Target
DP-1: New and/or improved gender-responsive public sector policies, programmes, and expenditure on: <ul style="list-style-type: none"> <li>• Labour rights and social protection (e.g., ratify C189, Violence Against Women Law, Social Security Law)</li> <li>• Labour migration governance (e.g., Law Relating to Overseas Employment, Plan of Action on Labour Migration)</li> <li>• Forced labour, child labour and anti-trafficking (e.g., Plan of Action on Forced Labour, Anti-Trafficking in Persons Law)</li> <li>• Employment and skills development (e.g., Skills Development Law, TVET Law, National Occupational Competency Standards)</li> </ul>	DP-1.1: # of changes to labour related public sector policies and programmes supported by LIFT	Programme/ IPs						
	DP-1.2: # of changes in labour related public sector budget allocation/ spending supported by LIFT	Programme/ IPs						
	DP-1.3: # of LIFT supported labour related policy-oriented events organised	Programme/ IPs						
	DP-1.4: # of LIFT supported labour related policy oriented publications provided to key policy makers	Programme/ IPs						
DS-1: Enhanced capacity of stakeholders to support decent work (including through reducing gender wage gap), labour mobility and anti-trafficking	DS-1.1: # of representatives of government, private sector, civil society, labour organizations and media trained with LIFT support on labour and social protection, safe migration and anti-trafficking, by sex	Programme/ IPs						
	DS-1.2: # of private sector enterprises whose compliance with ethical code of conduct related to recruitment and employment practices is audited	Programme/ IPs						
	DS-1.3: Amount of financial compensation awarded to workers for redress of grievances related to labour rights abuses and human trafficking	Programme/ IPs						



**LIFT LOGICAL FRAMEWORK 2019-2023**  
*Milestones and targets currently under consideration*



Decent Work and Labour Mobility

Result	Indicator	Data Source	2010-2018 Achievement	2019 Milestone	2020 Milestone	2021 Milestone	2022 Milestone	2023 Target
DH-1: Increased access to information, training and support services for women and men migrants and other vulnerable workers	DH-1.1: # of individuals successfully completing LIFT supported training on technical and vocational skills and enterprise development	IPs						
	DH-1.2: # of migrant workers and family members provided with LIFT supported information, training and support services on safe migration and financial literacy	IPs						
	DH-1.3: # of survivors of trafficking provided with LIFT supported shelter and/or support services	IPs						
DH-2: Expanded opportunities for decent work, particularly for workers who are at a heightened risk of exploitation and abuse	DH-2.1: %/# of individuals successfully completing LIFT supported training who establish their own enterprises (including trafficking survivors)	IPs						
	DH-2.2: # of individuals employed six months after completing LIFT supported vocational skills training	Programme/ IPs (Tracer Studies)						
	DH-2.3: %/# of individuals successfully completing LIFT supported training with increased income from their employment or enterprise	Programme/ IPs						
	DH-2.4: % of individuals employed in a situation of forced labour within LIFT target areas	LIFT HH Survey						